

Texturas

10th EDITION

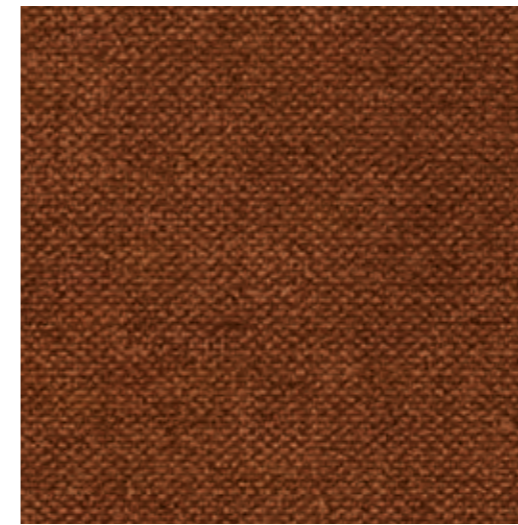
crevin
original fabrics

Tejidos para la vida *Fabrics for life*

Inspirational book



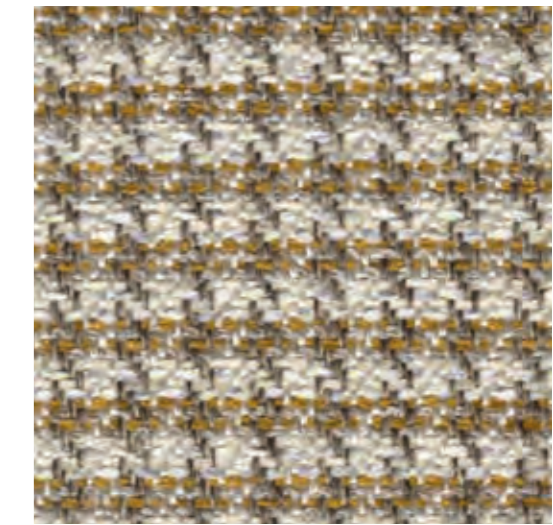
crevin
original fabrics



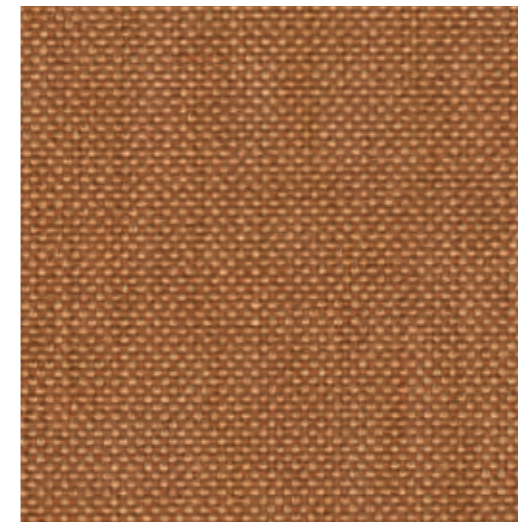
VELVETY 26



ONIX 20



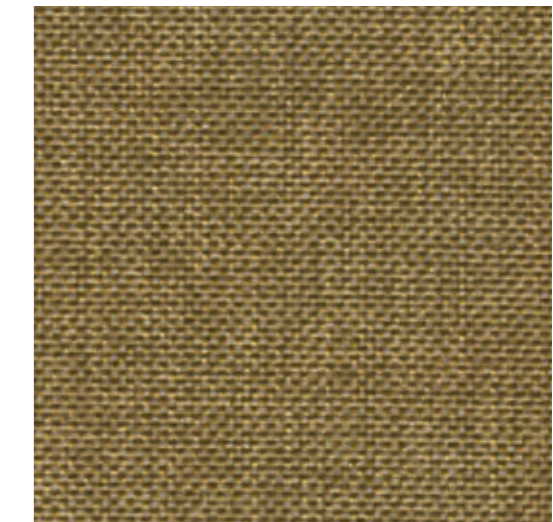
CHIC 20



LIBRA 23



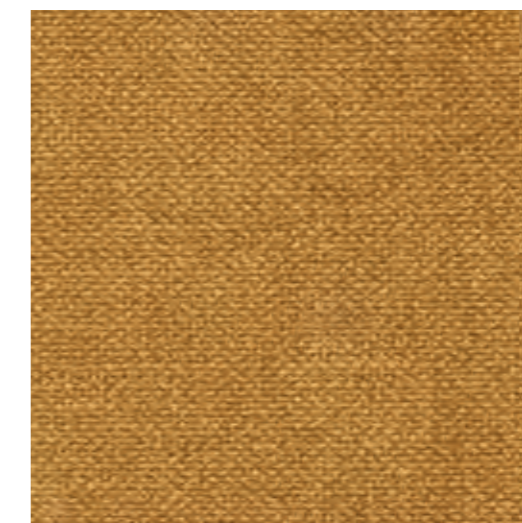
CREDO 20



LIBRA 20



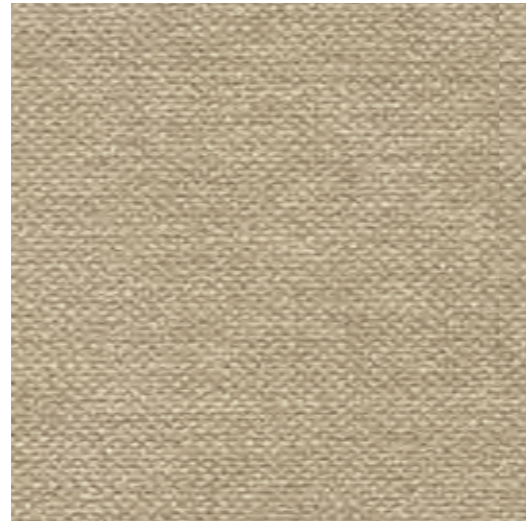
TWIN 20



VELVETY 20



ITO 20



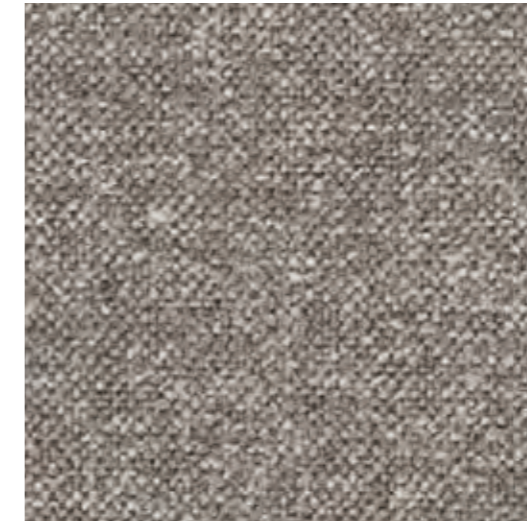
VELVETY 05



ITO 05



TWIN 05



ITO 11



VELVETY 11



CREDO 02



LIBRA 05



CHIC 05



CREDO 05



ONIX 07



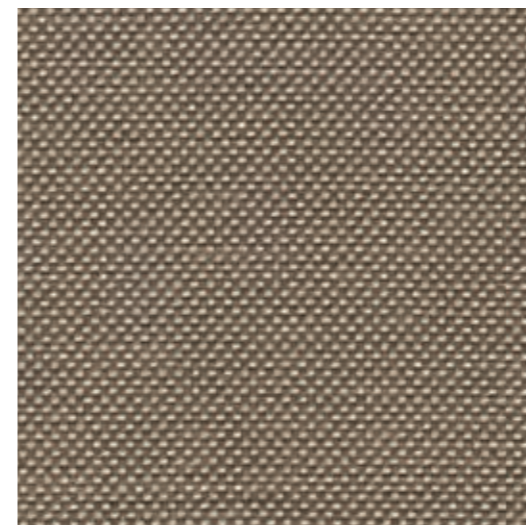
ONIX 05



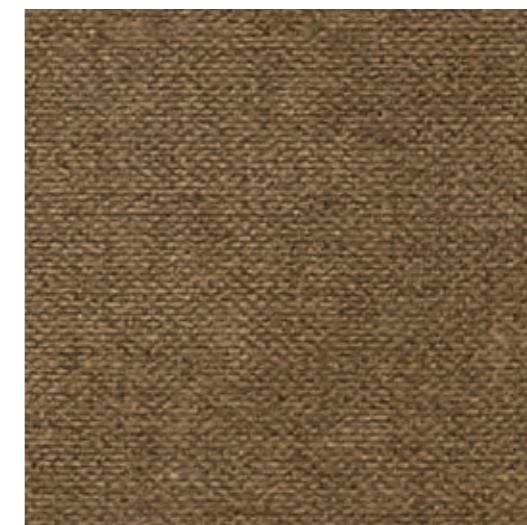
TWIN 02



VELVETY 07



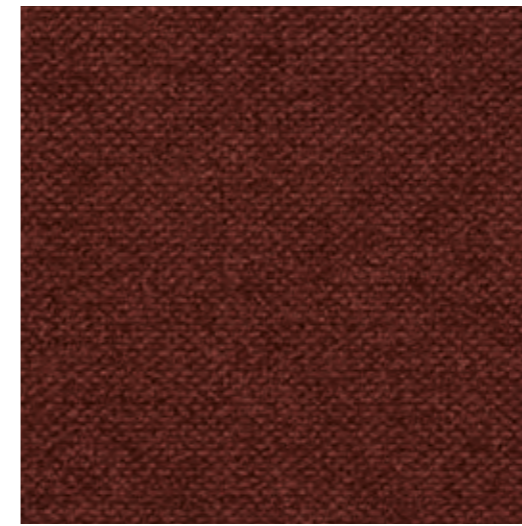
LIBRA 10



VELVETY 10



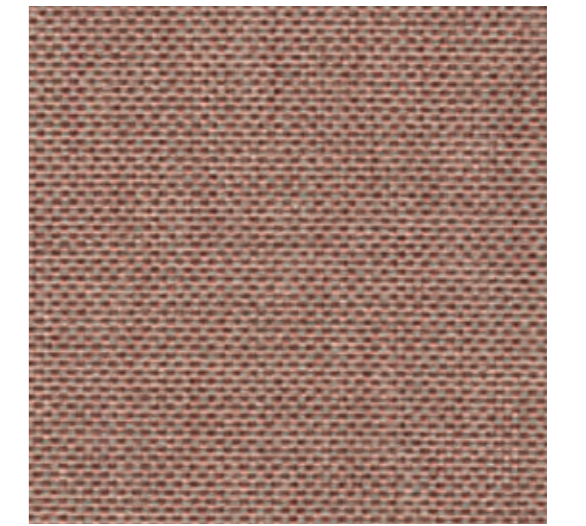
TWIN 05 | CHIC 20 | VELVETY 20



VELVETY 22



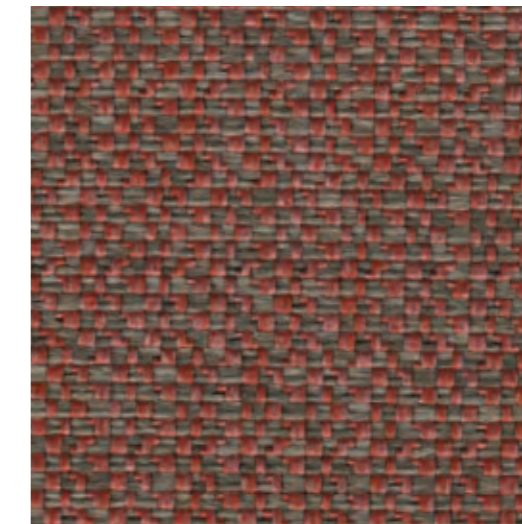
ITO 21



LIBRA 61



CREDO 61



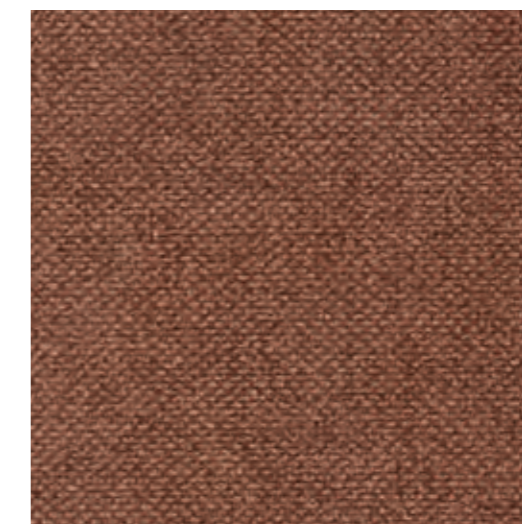
TWIN 69



CHIC 66



ONIX 62



VELVETY 71



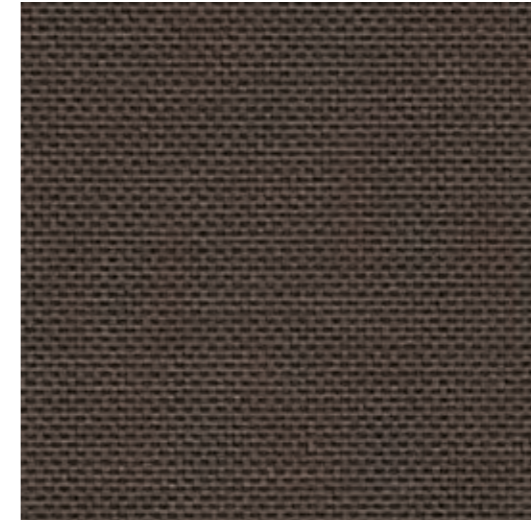
ITO 71



CREDO 18



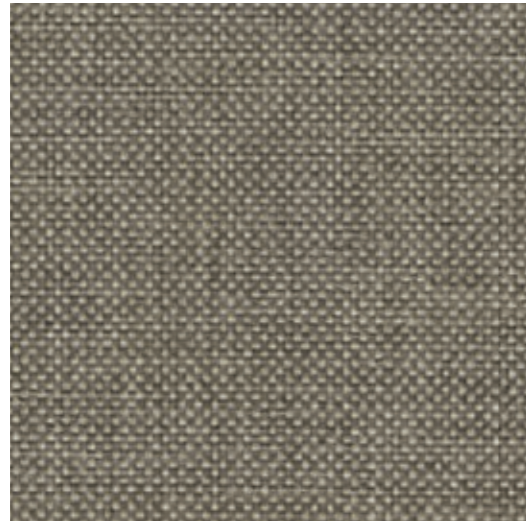
ONIX 11



LIBRA 12



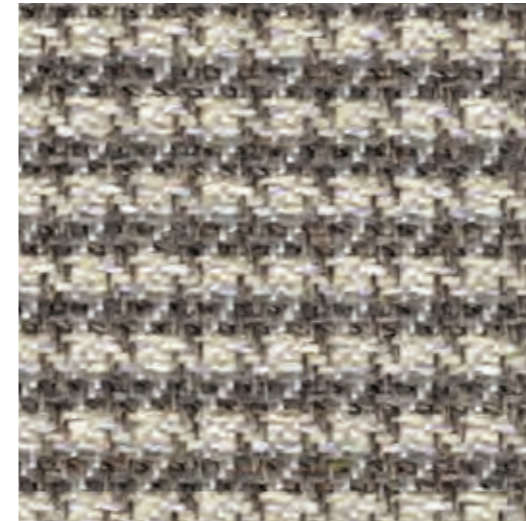
CREDO 11



LIBRA 08



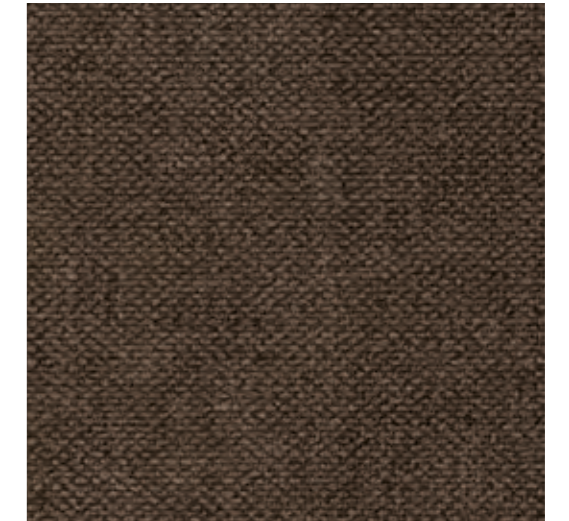
ITO 18



CHIC 10



ONIX 18



VELVETY 12



TWIN 08



VELVETY 18



LIBRA 18



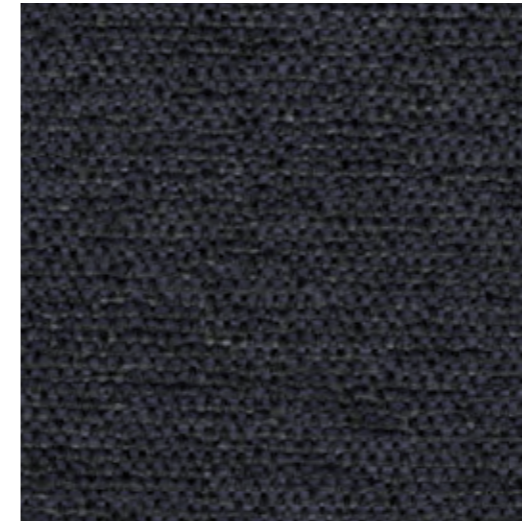
TWIN 11



LIBRA 53



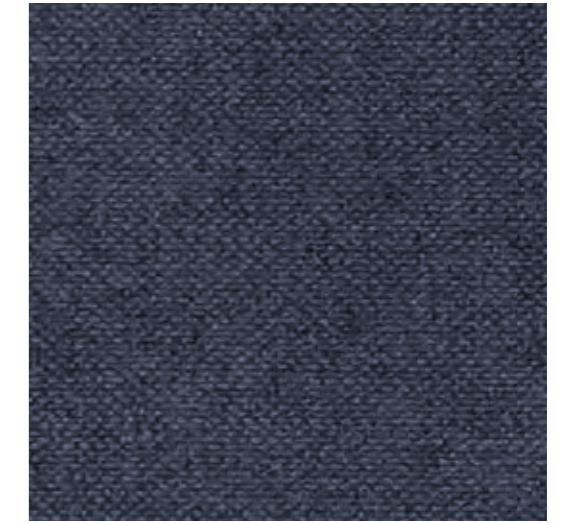
ONIX 62 | ITO 21



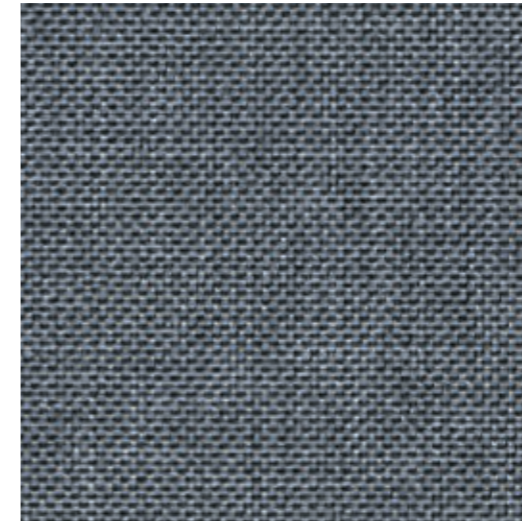
ONIX 47



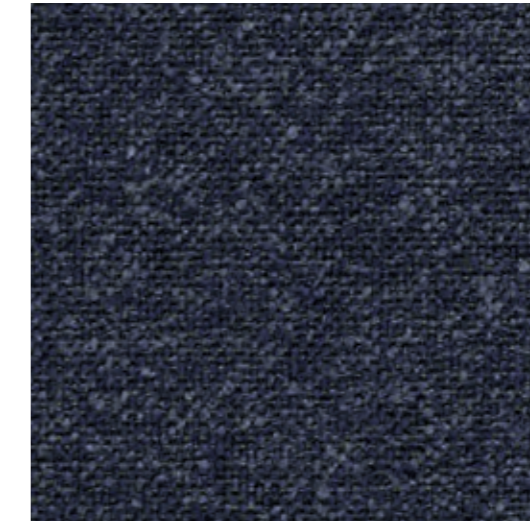
CHIC 45



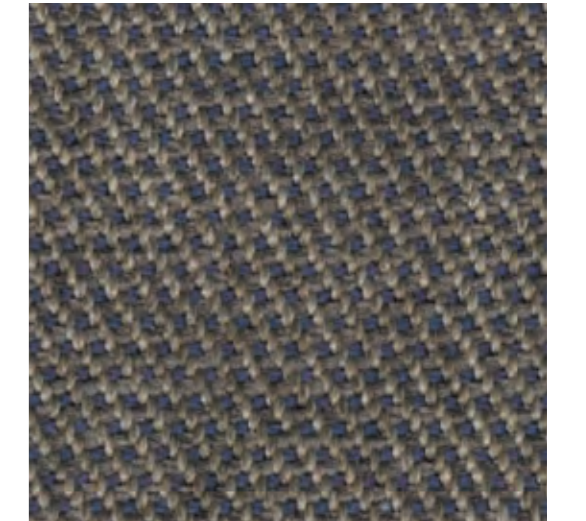
VELVETY 45



LIBRA 41



ITO 45



CREDO 45



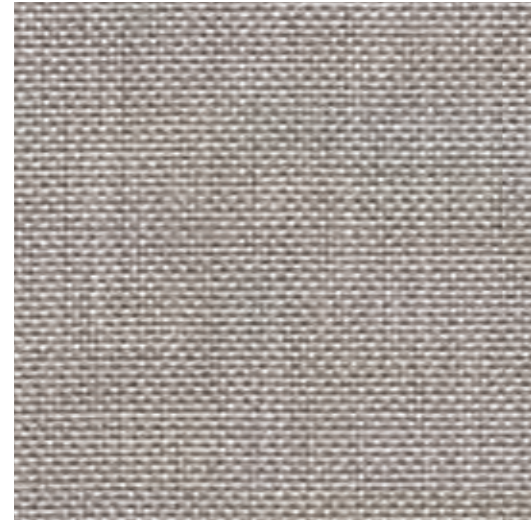
TWIN 45



VELVETY 43



LIBRA 47



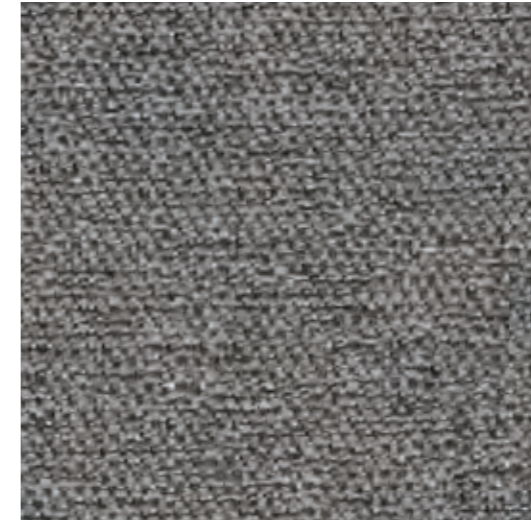
LIBRA 07



ITO 51



CREDO 51



ONIX 54



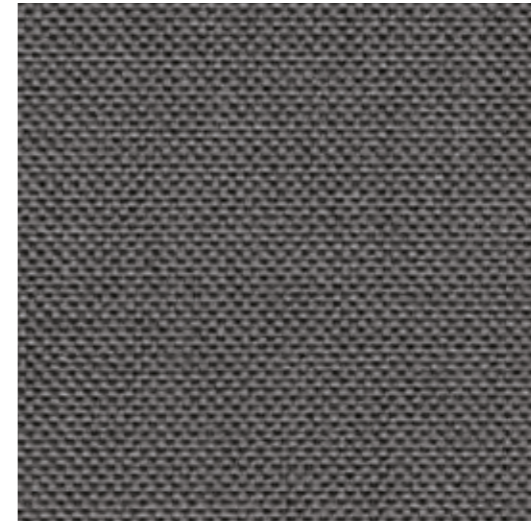
VELVETY 51



TWIN 51



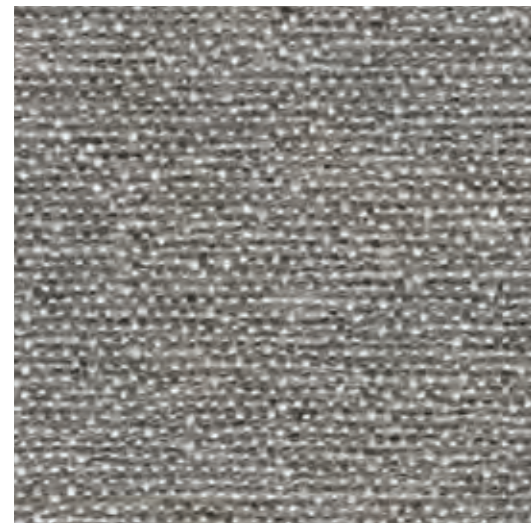
CHIC 52



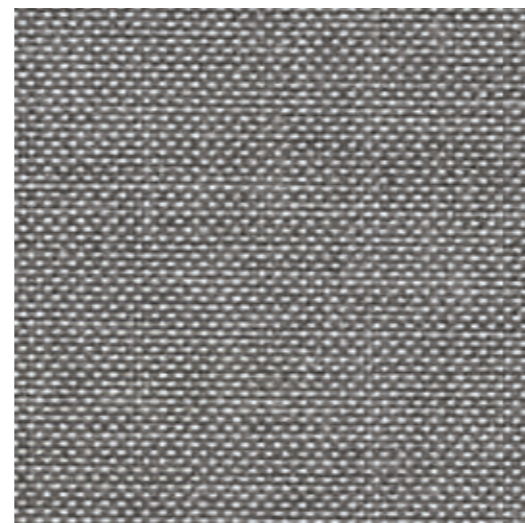
LIBRA 51



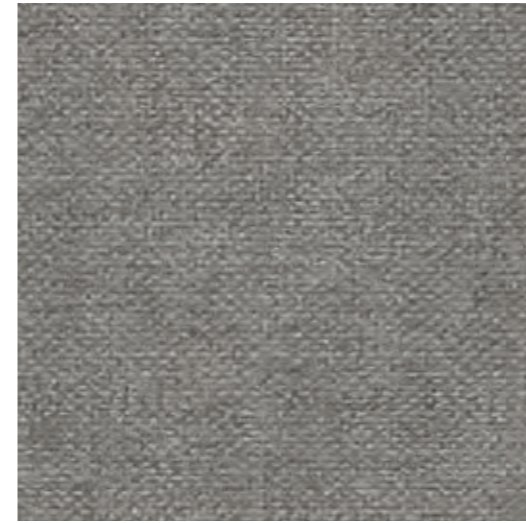
TWIN 54



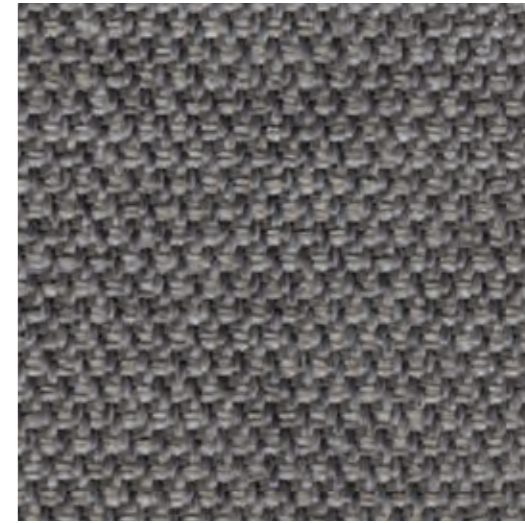
ONIX 50



LIBRA 50



VELVETY 54



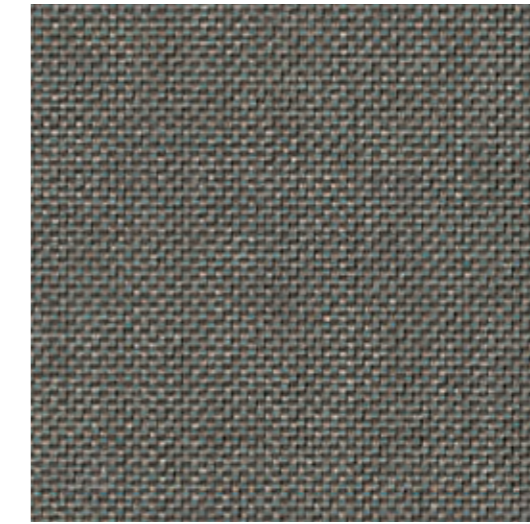
CREDO 54



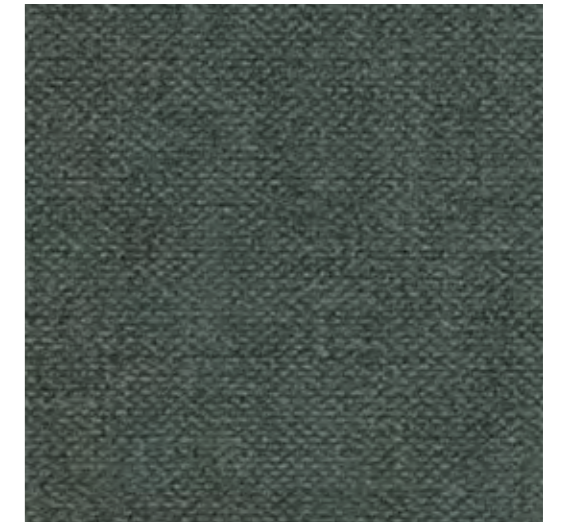
ITO 51 | LIBRA 47 | CHIC 45



ITO 38



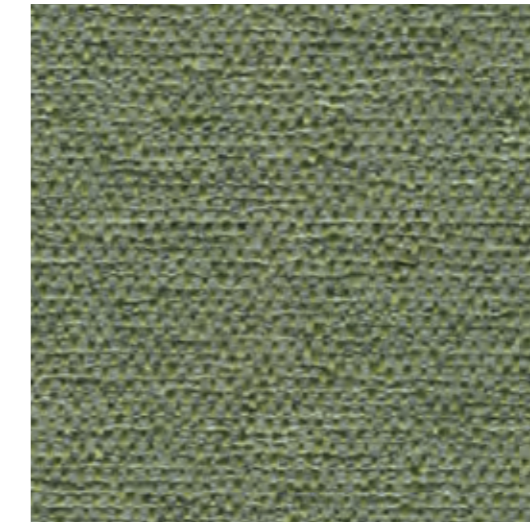
LIBRA 40



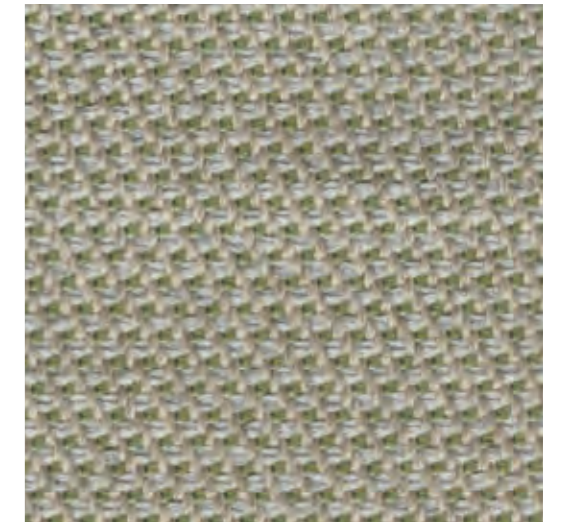
VELVETY 33



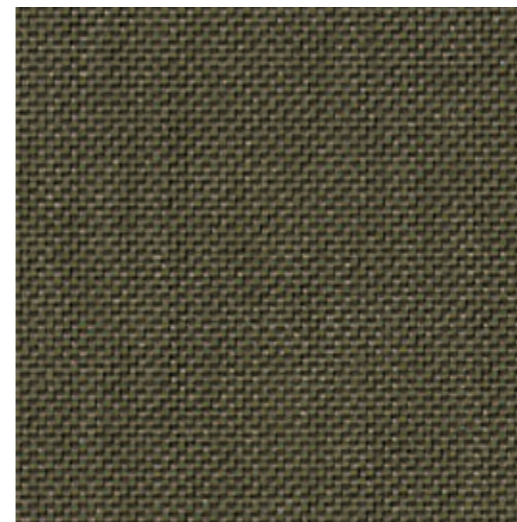
TWIN 30



ONIX 32



CREDO 39



LIBRA 30



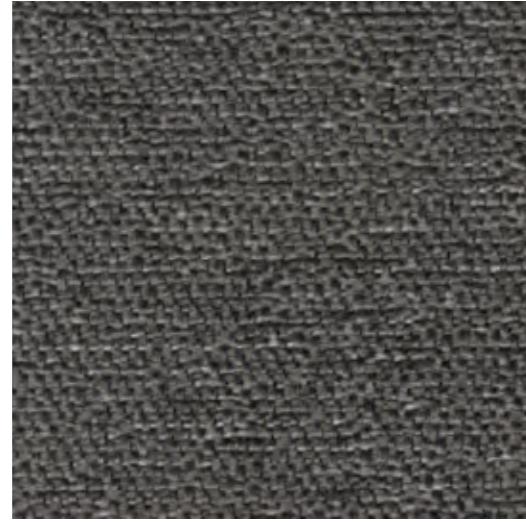
VELVETY 32



CHIC 38



VELVETY 52



ONIX 59



CHIC 53



ITO 53



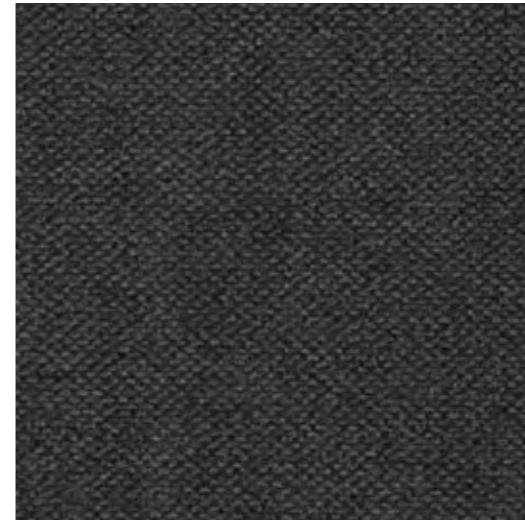
TWIN 53



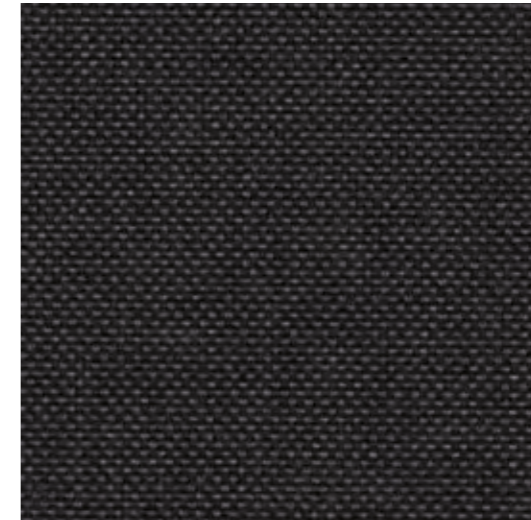
CREDO 52



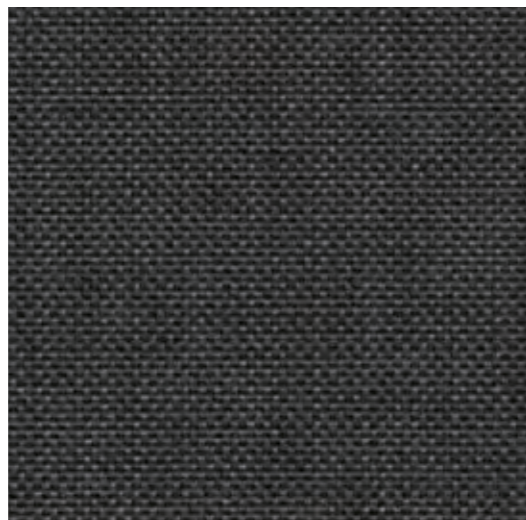
ITO 52



VELVETY 53



LIBRA 59



LIBRA 52



TWIN 59



CREDO 53



ONIX 53





Artículo <i>Article</i>	Ancho <i>Width</i>	Peso <i>Weight</i>	Composición <i>Composition</i>	Martindales	Solidez a la luz <i>Lightfastness</i>	Pilling	Condiciones de lavado <i>Washing conditions</i>
CHIC	140	750	53%PES 34%PP 13%CO	60.000	5-6	4-5	
CREDO	140	750	55%PP 39%PES 6%CO	>100.000	6	4-5	
ITO	140	812	71%PES 20%PP 9%CO	>100.000	5-6	4-5	
LIBRA	140	616	50%PP 32%PES 18%CO	66.000	6-7	4-5	
ONIX	140	620	68%PES 24%PP 8%CO	70.000	6	4-5	
TWIN	140	795	76%PP 17%PES 7%CO	35.000	>6	4-5	
VELVETY	140	780	91%PES 9%CO	200.000	5-6	5	



Hilo reciclado
Recycled content



Cero residuos
Zero waste



Libre de biocidas y PFCs
Biocide and PFCs free

OEKO-TEX®
CONFIDENCE IN TEXTILES
STANDARD 100
20200K0217 AITEK



crevin

original fabrics

TEXTURAS es una colección de tejidos premium que fusiona el diseño atemporal con un estilo de vida sostenible. Fabricados con los mejores materiales, las telas TEXTURAS combinan el confort del hogar con las altas prestaciones que requieren los espacios más exigentes.

TEXTURAS is a premium fabric collection that embodies a sustainable lifestyle with a timeless design aesthetic. Made from the best materials, TEXTURAS blends the comforts of the modern home with the performance needed for today's multi-purpose spaces.

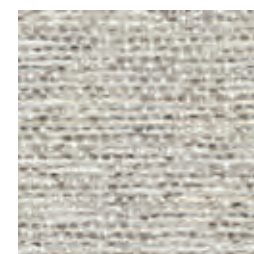
Todos los tejidos de este catálogo están diseñados y fabricados exclusivamente por Crevin s.a. Los tejidos de Crevin se crean utilizando materiales y procesos que no ponen a riesgo las personas o el medio ambiente.

All fabrics in this catalogue are exclusively designed and made by Crevin s.a. Crevin fabrics are created using considered materials and processes without putting burden on people or the environment.

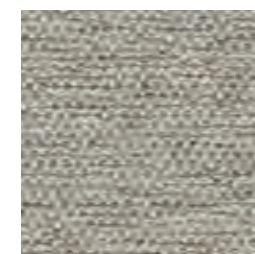
ONIX



07*



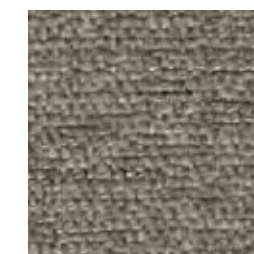
05*



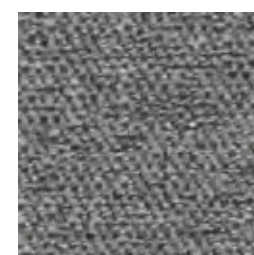
07*



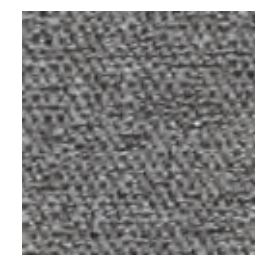
11*



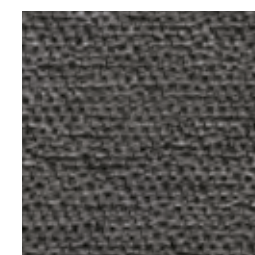
18*



50*



54*



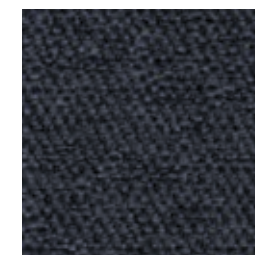
59*



53*



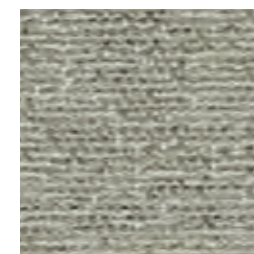
49



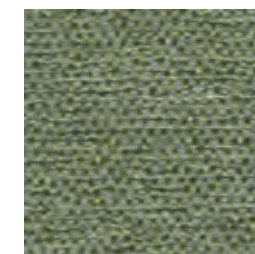
45



47



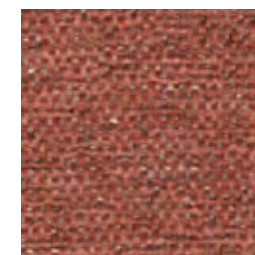
39



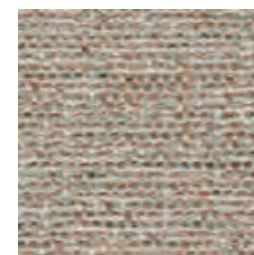
32



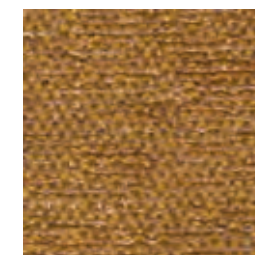
38



62



29



20

*Servicio en stock
*Stock service

ONIX

ONIX

crevin
efficiency



Composición / <i>Composition</i>	68%PES 24%PP 8%CO	
Ancho / <i>Width</i>	140	
Gramaje Lineal / <i>Linear Weight</i>	620 gr/ml ± 5%	
Resistencia al deslizamiento de las costuras (mm) <i>Seam slippage resistance (mm)</i>	URD / <i>WARP</i>	TRM / <i>WEFT</i>
	1,5	1
Resistencia a la abrasión <i>Abrasion resistance</i>	Rotura hilo (A) / Repelado chenilla (B) <i>End point (A) / Fully worn off (B)</i>	70.000 (A)
	Cambio aspecto 3000c <i>Change aspect 3000c</i>	4-5
Resistencia al pilling / <i>Pilling resistance</i>	4-5	
Reacción al fuego* <i>Assessment of ignitability*</i>	BS5852 Sche. Part 4 Source 0	PASA / <i>PASS</i>
	EN 1021 Part 1	PASA / <i>PASS</i>
	CAL TB 117:2013	PASA / <i>PASS</i>
	NFPA 260:2013	PASA / <i>PASS</i>

* Bajo solicitud / *Upon request*: BS5852 Sche. Part 4 Source 1, EN 1021 Part 2, BS7176 Low Hazard, UNI 9175 3IM

Solidez a la luz artificial / <i>Lightfastness</i>	6	
Solidez al frote / <i>Colour fastness to rubbing</i>	SECO / <i>DRY</i>	HUM / <i>WET</i>
	4-5	4-5
Condiciones de lavado / <i>Washing conditions</i>		

Sostenibilidad / *Sustainability*

33% hilo reciclado
33% recycled content

Cero residuos
Zero waste

Libre de biocidas y PFCs
Biocide and PFCs free

OEKO-TEX®
CONFIDENCE IN TEXTILES
STANDARD 100
20200K0217 AITEX

REACH
COMPLIANT

MADE IN EUROPE

Made by Crevin
www.crevin.com

VELVETY



07*



05*



07*



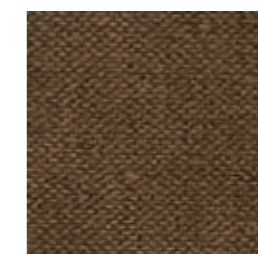
11*



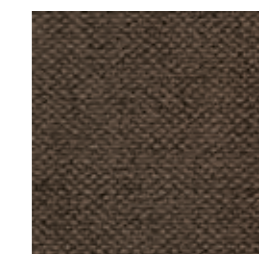
10*



18*



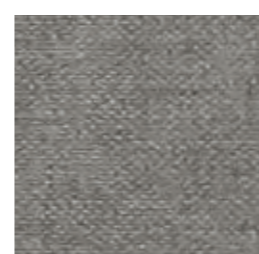
17*



12*



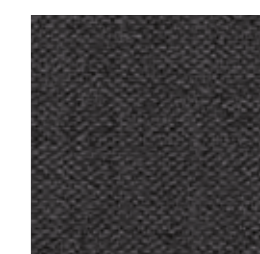
51*



54*



52*



53*



49*



45*



43*



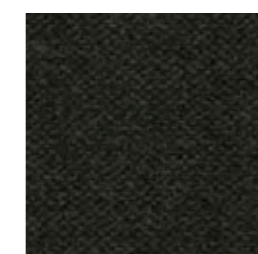
47*



33*



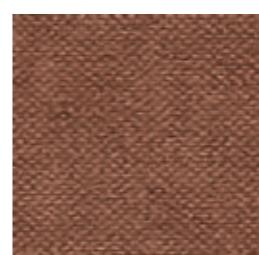
32*



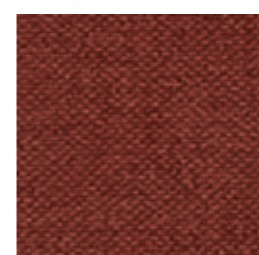
38*



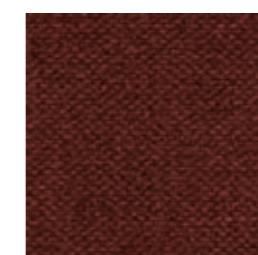
35*



71*



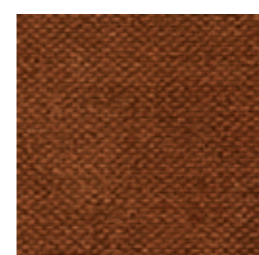
62*



22*



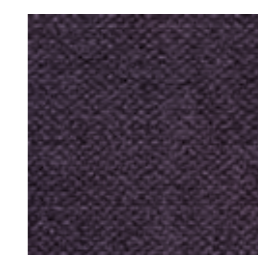
20*



26*



21*



44*



63*

*Servicio en stock
*Stock service



VELVETY

VELVETY

crevin
efficiency



Composición / Composition 91%PES 9%CO

Ancho / Width 140

Gramaje Lineal / Linear Weight 780 gr/ml ± 5%

Resistencia al deslizamiento de las costuras (mm) Seam slippage resistance (mm)	URD / WARP TRM / WEFT	
	1	1

Resistencia a la abrasión Abrasion resistance	Rotura hilo (A) / Repelado chenilla (B) End point (A) / Fully worn off (B)	200.000 (A)
	Cambio aspecto 3000c Change aspect 3000c	4-5

Resistencia al pilling / Pilling resistance 5

Reacción al fuego* Assessment of ignitability*	BS5852 Sche. Part 4 Source 0	PASA / PASS
	EN 1021 Part 1	PASA / PASS
	CAL TB 117:2013	PASA / PASS
	NFPA 260:2013	PASA / PASS

* Bajo solicitud / Upon request: BS5852 Sche. Part 4 Source 1, EN 1021 Part 2, BS7176 Low Hazard, UNI 9175 3IM

Solidez a la luz artificial / Lightfastness 5-6

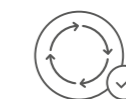
Solidez al frote / Colour fastness to rubbing	SECO / DRY HUM / WET	
	4	4

Condiciones de lavado / Washing conditions

Sostenibilidad / Sustainability



16% hilo reciclado
16% recycled content



Cero residuos
Zero waste



Libre de biocidas y PFCS
Biocide and PFCS free



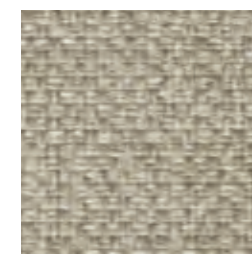
TWIN



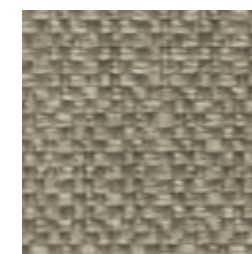
05*



02*



05*



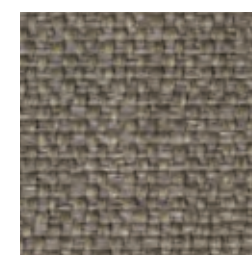
08*



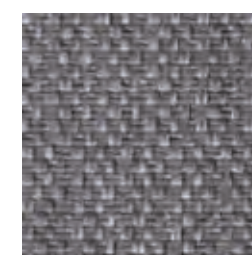
12*



51*



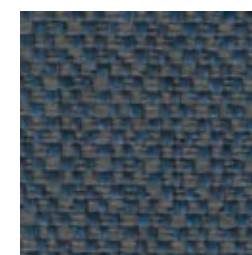
11*



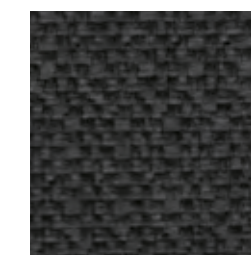
54*



59*



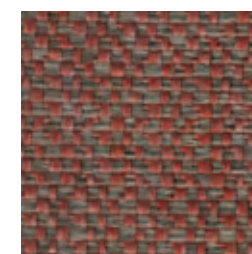
45



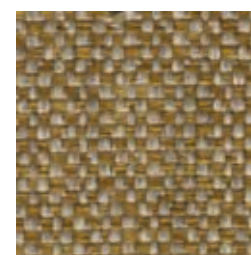
53



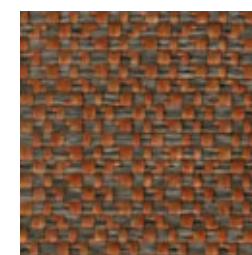
30



69



20



23

*Servicio en stock
*Stock service

TWIN

TWIN

crevin
efficiency



Composición / Composition 76%PP 17%PES 7%CO

Ancho / Width 140

Gramaje Lineal / Linear Weight 795 gr/ml ± 5%

Resistencia al deslizamiento de las costuras (mm) Seam slippage resistance (mm)	URD / WARP	TRM / WEFT
	1,9	1,7

Resistencia a la abrasión Abrasion resistance	Rotura hilo (A) / Repelado chenilla (B) End point (A) / Fully worn off (B)
	35.000 (A)

Resistencia al pilling / Pilling resistance	Cambio aspecto 3000c Change aspect 3000c
	3-4

Resistencia al pilling / Pilling resistance 4-5

Reacción al fuego* Assessment of ignitability*	BS5852 Sche. Part 4 Source 0	PASA / PASS
	EN 1021 Part 1	PASA / PASS
	CAL TB 117:2013	PASA / PASS
	NFPA 260:2013	PASA / PASS

* Bajo solicitud / Upon request: BS5852 Sche. Part 4 Source 1, EN 1021 Part 2, BS7176 Low Hazard, UNI 9175 3IM

Solidez a la luz artificial / Lightfastness >6

Solidez al frote / Colour fastness to rubbing	SECO / DRY	HUM / WET
	4-5	4-5

Condiciones de lavado / Washing conditions

Sostenibilidad / Sustainability

24% hilo reciclado
24% recycled content

Cero residuos
Zero waste

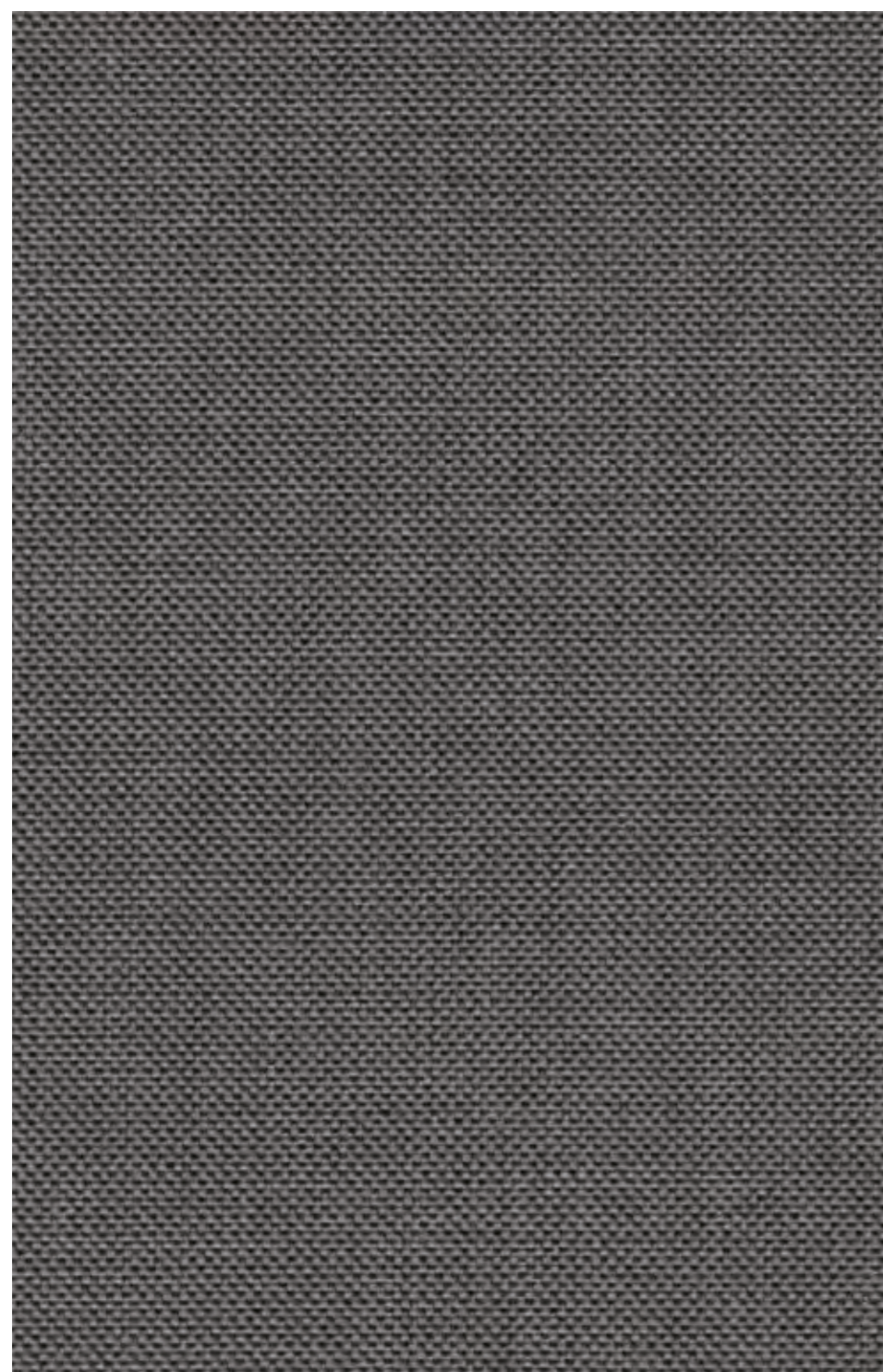
Libre de biocidas y PFCs
Biocide and PFCs free

OEKO-TEX®
CONFIDENCE IN TEXTILES
STANDARD 100
20200K0217 AITEX

REACH
COMPLIANT

MADE IN EUROPE

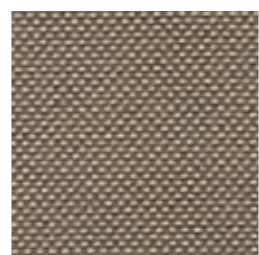
Made by Crevin
www.crevin.com



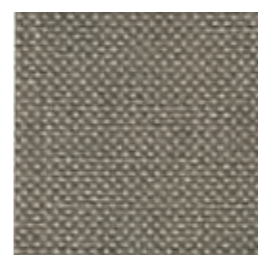
51*



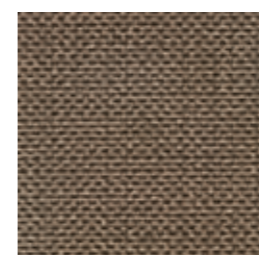
05*



10*



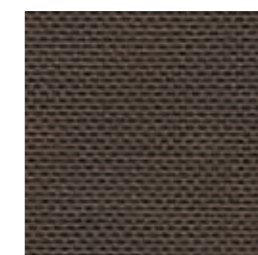
08*



11*



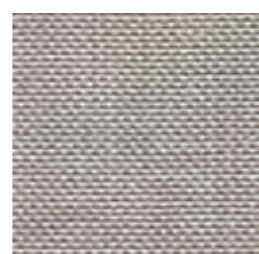
18*



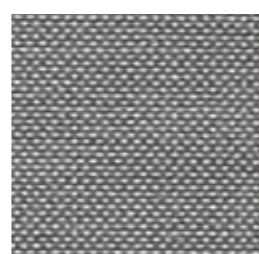
12*



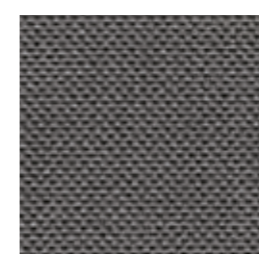
53*



07*



50*



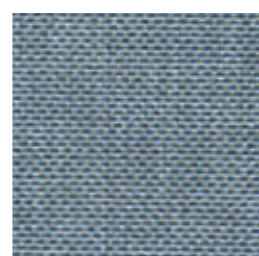
51*



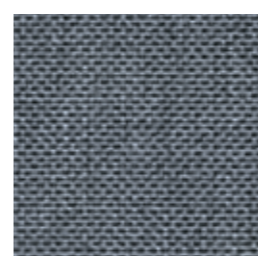
52*



59



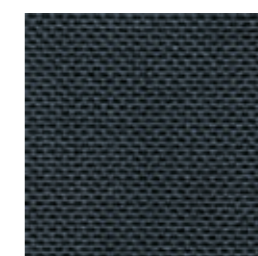
49



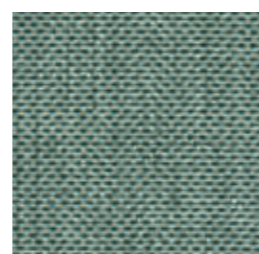
41*



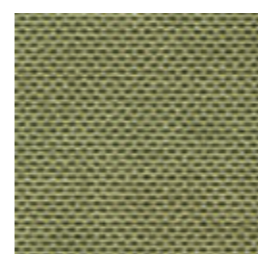
42



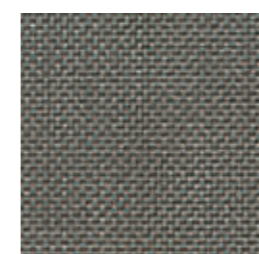
47



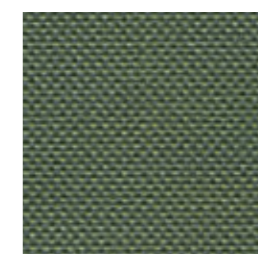
34



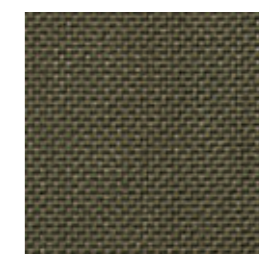
39



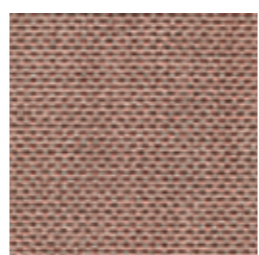
40*



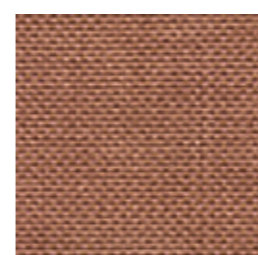
37



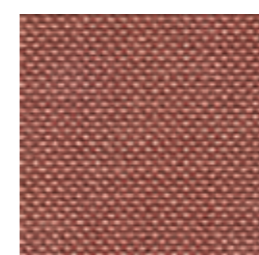
30



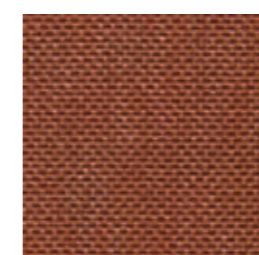
61



60



62



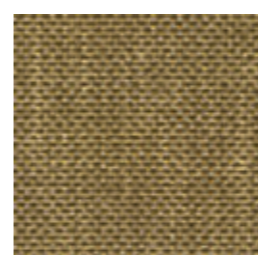
22



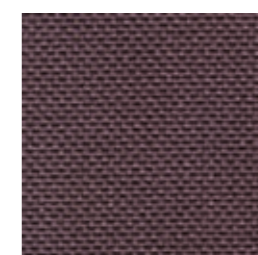
29



23



20



64

LIBRA

LIBRA

crevin
efficiency



Composición / Composition 50%PP 32%PES 18%CO

Ancho / Width 140

Gramaje Lineal / Linear Weight 616 gr/ml ± 5%

Resistencia al deslizamiento de las costuras (mm) Seam slippage resistance (mm)	URD / WARP	TRM / WEFT
	1,6	1

Resistencia a la abrasión Abrasion resistance	Rotura hilo (A) / Repelado chenilla (B) End point (A) / Fully worn off (B)	66.000 (A)
	Cambio aspecto 3000c Change aspect 3000c	4-5

Resistencia al pilling / Pilling resistance 4-5

Reacción al fuego* Assessment of ignitability*	BS5852 Sche. Part 4 Source 0	PASA / PASS
	EN 1021 Part 1	PASA / PASS
	CAL TB 117:2013	PASA / PASS
	NFPA 260:2013	PASA / PASS

* Bajo solicitud / Upon request: BS5852 Sche. Part 4 Source 1, EN 1021 Part 2, BS7176 Low Hazard, UNI 9175 3IM

Solidez a la luz artificial / Lightfastness 6-7

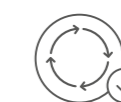
Solidez al frote / Colour fastness to rubbing	SECO / DRY	HUM / WET
	4-5	4-5

Condiciones de lavado / Washing conditions 

 Sostenibilidad / Sustainability



50% hilo reciclado
50% recycled content



Cero residuos
Zero waste

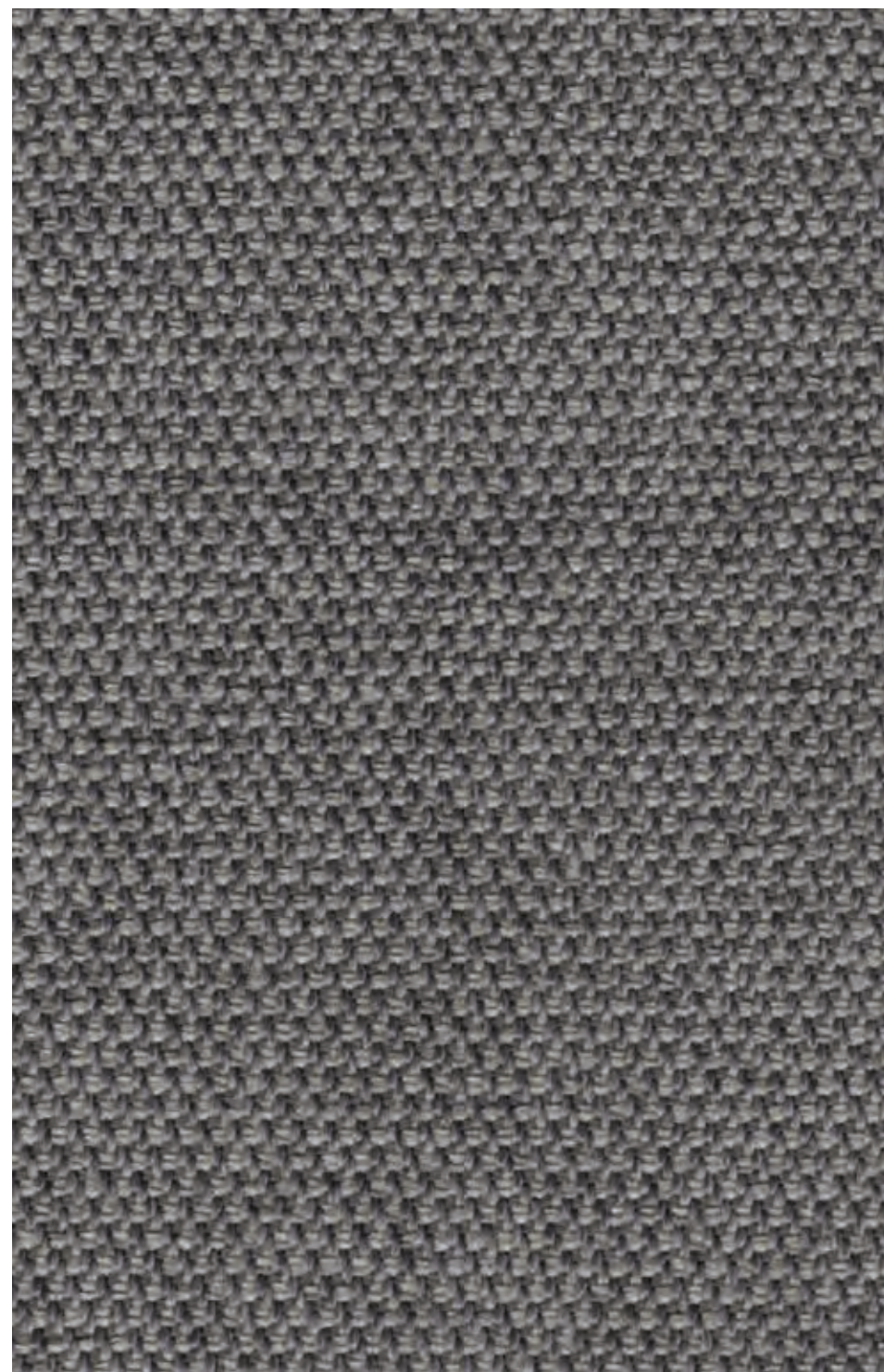


Libre de biocidas y PFCs
Biocide and PFCs free



Made by Crevin
www.crevin.com

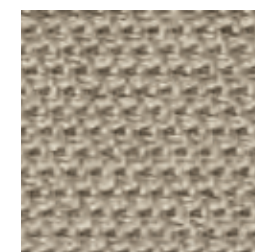
CREDO



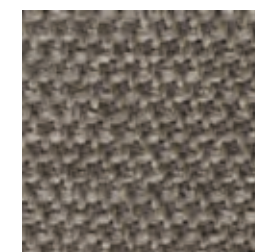
54*



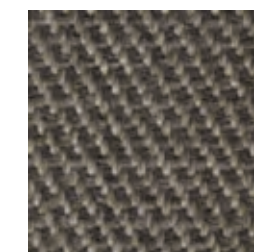
02*



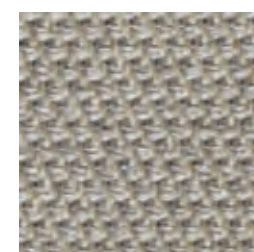
05*



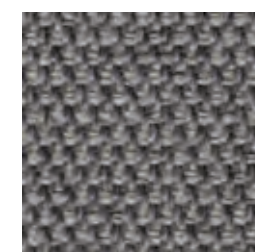
18*



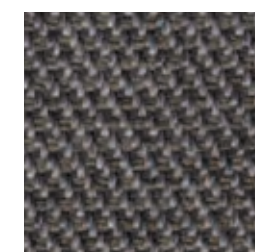
11*



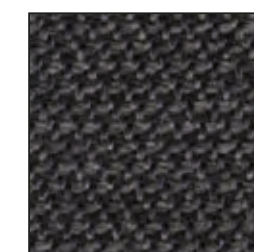
51*



54*



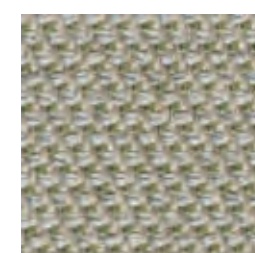
52*



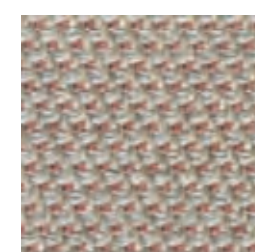
53*



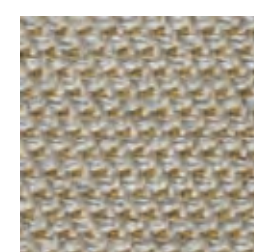
45



39



61



20

*Servicio en stock
*Stock service

CREDO

CREDO

crevin
efficiency



Composición / Composition 55%PP 39%PES 6%CO

Ancho / Width 140

Gramaje Lineal / Linear Weight 750 gr/ml ± 5%

Resistencia al deslizamiento de las costuras (mm) Seam slippage resistance (mm)	URD / WARP	TRM / WEFT
	2	1,6

Resistencia a la abrasión Abrasion resistance	Rotura hilo (A) / Repelado chenilla (B) End point (A) / Fully worn off (B)
	>100.000 (A)

Resistencia a la abrasión Abrasion resistance	Cambio aspecto 3000c Change aspect 3000c
	4-5

Resistencia al pilling / Pilling resistance 4-5

Reacción al fuego* Assessment of ignitability*	BS5852 Sche. Part 4 Source 0	PASA / PASS
	EN 1021 Part 1	PASA / PASS
	CAL TB 117:2013	PASA / PASS
	NFPA 260:2013	PASA / PASS

* Bajo solicitud / Upon request: BS5852 Sche. Part 4 Source 1, EN 1021 Part 2, BS7176 Low Hazard, UNI 9175 3IM

Solidez a la luz artificial / Lightfastness 6

Solidez al frote / Colour fastness to rubbing	SECO / DRY	HUM / WET
	4-5	4-5

Condiciones de lavado / Washing conditions 

 Sostenibilidad / Sustainability


23% hilo reciclado
23% recycled content


Cero residuos
Zero waste


Libre de biocidas y PFCs
Biocide and PFCs free

OEKO-TEX®
CONFIDENCE IN TEXTILES
STANDARD 100
20200K0217 AITEX


REACH
COMPLIANT

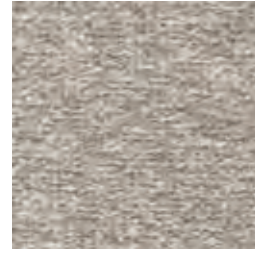
 **MADE IN EUROPE**

Made by Crevin
www.crevin.com

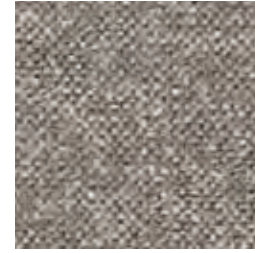
ITO



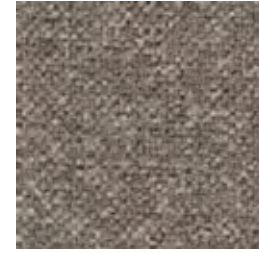
51*



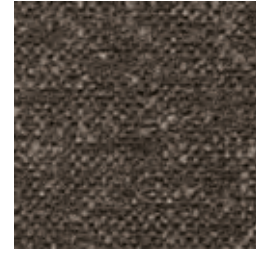
05*



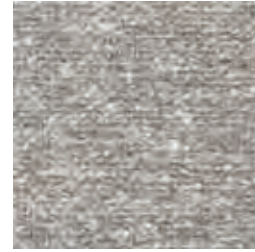
11*



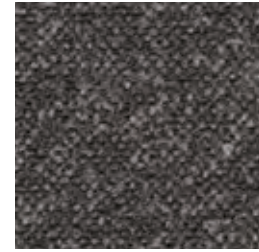
18*



12



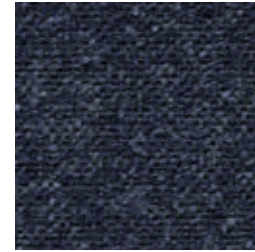
51*



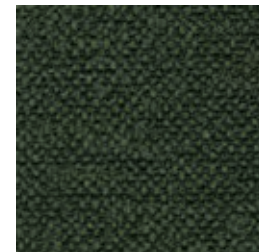
52*



53*



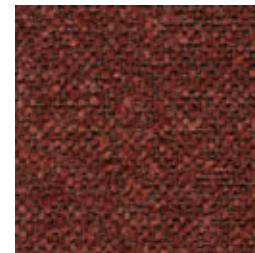
45



38



71



21



20

*Servicio en stock
*Stock service

ITO

ITO

crevin
efficiency



Composición / *Composition* 71%PES 20%PP 9%CO

Ancho / *Width* 140

Gramaje Lineal / *Linear Weight* 812 gr/ml \pm 5%

Resistencia al deslizamiento de las costuras (mm) <i>Seam slippage resistance (mm)</i>	URD / <i>WARP</i>	TRM / <i>WEFT</i>
	1,8	2

Resistencia a la abrasión <i>Abrasion resistance</i>	Rotura hilo (A) / Repelado chenilla (B) <i>End point (A) / Fully worn off (B)</i>	>100.000 (A)
	Cambio aspecto 3000c <i>Change aspect 3000c</i>	4-5

Resistencia al pilling / *Pilling resistance* 4-5

Reacción al fuego* <i>Assessment of ignitability*</i>	BS5852 Sche. Part 4 Source 0	PASA / <i>PASS</i>
	EN 1021 Part 1	PASA / <i>PASS</i>
	CAL TB 117:2013	PASA / <i>PASS</i>
	NFPA 260:2013	PASA / <i>PASS</i>

* Bajo solicitud / *Upon request*: BS5852 Sche. Part 4 Source 1, EN 1021 Part 2, BS7176 Low Hazard, UNI 9175 3IM

Solidez a la luz artificial / *Lightfastness* 5-6

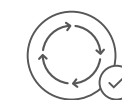
Solidez al frote / <i>Colour fastness to rubbing</i>	SECO / <i>DRY</i>	HUM / <i>WET</i>
	4-5	4-5

Condiciones de lavado / *Washing conditions*

Sostenibilidad / *Sustainability*



27% hilo reciclado
27% recycled content



Cero residuos
Zero waste



Libre de biocidas y PFCs
Biocide and PFCs free



Made by Crevin
www.crevin.com

¿Qué es Efficiency? *What is Efficiency?*

EL arte de vivir bien

Efficiency es la marca de fácil mantenimiento de Crevin para hogares y espacios de trabajo cómodos y saludables.

Gracias a su tecnología de doble tela y materiales de primera calidad, los tejidos Efficiency garantizan una estética duradera, incluso en los entornos más dinámicos.

Los tejidos Efficiency están protegidos con el tratamiento antimicrobiano Sanitized® y respaldado por una garantía de 5 años contra el envejecimiento.

Diseñado y fabricado con cero residuos en Terrassa (Barcelona) por Crevin s.a.

The art of living well

Efficiency is Crevin's easy care brand for untroubled and healthful living and working spaces.

Thanks to their double-weave technology and high-quality materials, Efficiency fabrics guarantee long-lasting aesthetics, even in the most dynamic environments.

Efficiency fabrics are protected by the antimicrobial treatment Sanitized® and backed by a 5-year manufacturer's guarantee against aging.

Designed and crafted with zero waste in Terrassa (Barcelona) by Crevin s.a.



Fácil limpieza
Easy clean



Años garantía
Year guarantee



Sostenibilidad
Sustainability



Antimicrobiano
Antimicrobial

crevin
efficiency





Fácil limpieza *Easy clean*

La suciedad y las manchas se eliminan fácilmente de todos los tejidos Efficiency utilizando una simple solución de agua y jabón. La protección de Efficiency es segura y permanente.

- Fácil eliminación de manchas
- Lavable a máquina
- Protección permanente

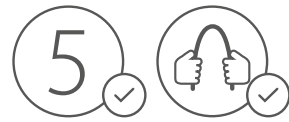
Soils and stains are easily removed from Efficiency fabrics using a simple water-soap solution. The protection of Efficiency is safe and permanent.

- *Easy stain and soil release*
- *Machine-washable*
- *Lifelong protection*



Para consultar las instrucciones de limpieza descargue nuestra guía Cuidado y Limpieza en www.crevin.com/es/descargas

For cleaning instructions download our Care & Clean guide at www.crevin.com/en/downloads



5 años de garantía *5-year guarantee*

Diseñados para resistir el impacto de los espacios interiores más activos, los tejidos Efficiency están avalados por una garantía de 5 años contra el desgaste y el envejecimiento.

- Construcción de doble tejido
- Materiales premium
- Estética duradera

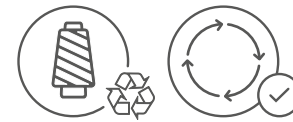
Designed to withstand the impact of the most active interior spaces, Efficiency fabrics are supported by a 5-year guarantee against wear and aging.

- *Double-weave construction*
- *Premium materials*
- *Long-lasting aesthetics*



Lea las condiciones de garantía de Efficiency en www.crevin.com/es/descargas

Read the Efficiency guarantee conditions at www.crevin.com/en/downloads



Sostenibilidad *Sustainability*

Los tejidos Efficiency combinan materiales de bajo impacto ambiental con fibra reciclada de restos de algodón, botellas PET y los propios desechos de Crevin.

- Cero residuos
- Uso de materia reciclada
- Manufactura sostenible (ISO 14001)

Efficiency fabrics combine locally sourced, low-impact materials with recycled fibre from cotton rags, pet bottles and Crevin's own yarn waste.

- *Zero-waste production*
- *Use of recycled materials*
- *Sustainably manufactured (ISO 14001)*



Para más información descargue nuestra declaración sostenibilidad en www.crevin.com/en/downloads

For more information download our sustainability statement at www.crevin.com/en/downloads



Antimicrobiano *Antimicrobial*

Los tejidos Efficiency están protegidos contra bacterias, ácaros y olores por Sanitized®, tecnología patentada suiza.

- Higiene y bienestar permanente
- Testado dermatológicamente
- Protección contra microbios

Efficiency fabrics are protected against bacteria, dust-mites and odours by the patented Swiss technology Sanitized®.

- *Permanent hygiene and wellbeing*
- *Dermatologically tested*
- *Protected against microbes*



Este artículo contiene un biocida con sustancia activa: Tetradecyldimoniumsilan (CAS: 41591-87-1).

This article contains a biocidal product with active substance: Tetradecyldimoniumsilan (CAS: 41591-87-1).

crevin
original fabrics

since 1976

“Creamos tejidos que convierten
el mueble tapizado en una pieza
de valor y bienestar.”

*“We create fabrics that transform
upholstered furniture into lasting
objects of value.”*



Acerca / About

+ de 40 años
tejiendo valor

Como fabricantes de tejidos de tercera generación de Terrassa (Barcelona), nos sentimos privilegiados de formar parte de un legado de 150 años de fabricación textil local. Somos una empresa verticalmente integrada, lo que nos permite mantener un control total sobre el desarrollo de nuestros productos, pasando por el tejido, la tintura y el acabado. Fabricamos bajo las normas ISO 9001 e ISO 14001 y exportamos a más de 60 países en todo el mundo.

+ 40 years
adding value

We are a third generation weaving mill from Terrassa (Barcelona), where we have the privilege to form part of a 150 year old legacy of local textile manufacturing. As a vertically integrated company we maintain full control over the development, weaving, finishing and dyeing of our fabrics. We manufacture under ISO 9001 and ISO 14001 and export our fabrics to over 60 countries worldwide.



Diseño de altas prestaciones

Estrechamente conectados con la cultura del diseño de Barcelona, los tejidos de Crevin unen las más altas prestaciones técnicas con una refinada estética Mediterránea. La calidad de nuestros tejidos se debe al uso exclusivo de materiales premium, la construcción a partir de una estructura de doble tela, así como una forma específica y única de mezclar hilos, texturas y colores.

Performance by design

Closely connected with the creative community of Barcelona, Crevin fabrics unite the highest quality standards with a refined, Mediterranean aesthetic. Our fabrics are defined by premium materials and double-woven structures, as well as a specific art of blending fibre, colour and texture in beautiful and captivating design.



Creatividad con ADN industrial *Creativity with industrial DNA*

Nuestra experiencia y conocimiento industrial son fundamentales en nuestro proceso creativo. Estamos constantemente explorando nuevas ideas, materiales y técnicas, y es el dominio del proceso de tejeduría y acabado lo que nos permite transformar nuestro know-how en productos de un alto valor añadido.

Our industrial hardware and expertise are fundamental to our design. We constantly explore new ideas, materials and techniques and apply that knowledge to our craft. By mastering the process of weaving and finishing we are able to translate our knowhow into high-quality products, ready to stand the test of time.

Sostenibilidad en armonía

Como diseñadores y fabricantes nos comprometemos a crear un producto atemporal y duradero. Somos una empresa zero-waste, lo que significa que reprocesamos y reciclamos todos nuestros residuos. Inspirados por la economía circular, hemos logrado transformar los restos de nuestra fabricación en hilaturas que se reutilizan para nuevos tejidos. Nuestro proceso productivo está certificado bajo ISO 14001, sistema de gestión medioambiental, y nuestros tejidos ofrecen el más alto nivel de seguridad de producto, certificado por OEKOTEX.

Sustainability in harmony

As fabric makers, we commit to creating a design product that is timeless and long-lasting. We are a zero-waste mill, meaning that all our residues are reprocessed or recycled into post-industrial content. Inspired by the circular economy we turn our weave leftovers into yarn that is reused for new fabric. Under the environmental standard ISO 14001 we commit to manufacturing responsibly and efficiently, while our fabrics offer the highest level of product safety, as certified by OEKOTEX.





Creando juntos

Nuestro equipo es un grupo de profesionales imaginativos y apasionados que comparten un propósito común. El diseño es creación y comienza con el uso de un lenguaje colectivo, como en una familia. Todas las ideas y decisiones son el resultado de un diálogo abierto que representa el espíritu a través del cual nuestro proceso creativo toma forma.

Creating together

Our team is an assembly of imaginative and passionate professionals, each with an individual talent serving a common purpose. We believe that design is about creation that starts with the use of collective language, much like in a family. All our ideas and decisions are the result of an open dialogue that represents the spirit through which our creative process takes shape.

Made by Crevin



Fácil limpieza
Easy clean



Años garantía
Year guarantee



Sostenibilidad
Sustainability



Antimicrobiano
Antimicrobial

Made by Crevin

www.crevin.com